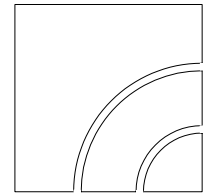


# Volumetric metering screw with adjustable flow rate

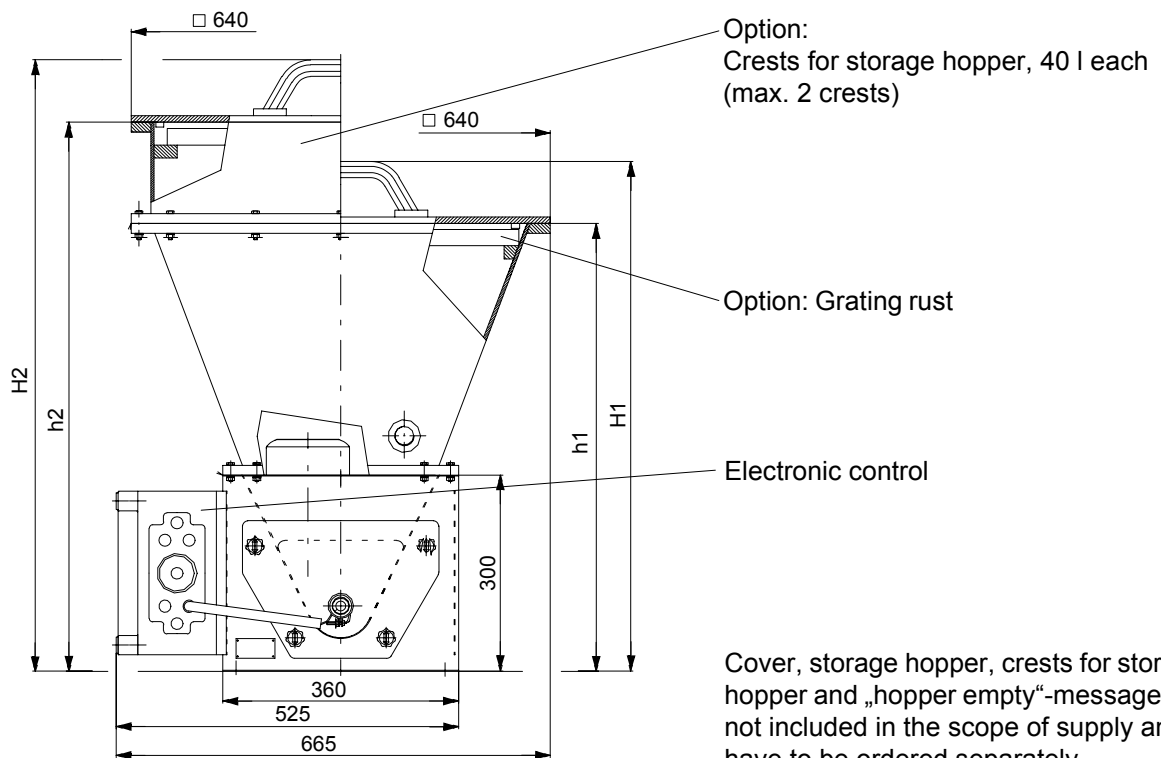
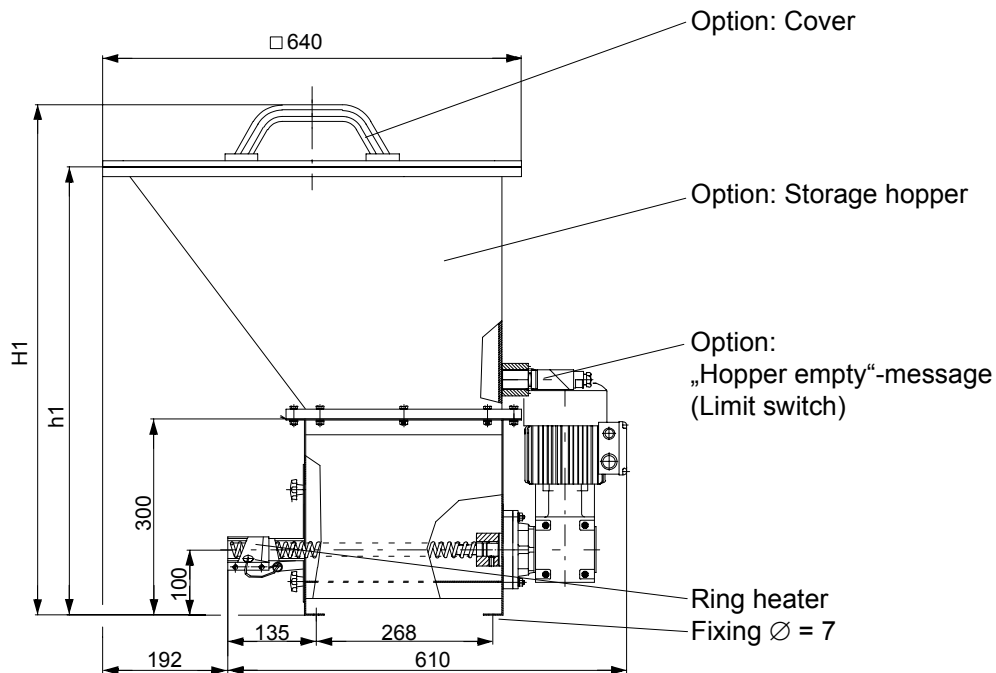
VDS 25/4...VDS 60/200

# sera

Dosieren  
Fördern  
Verdichten



10358-02GB  
1



Cover, storage hopper, crests for storage hopper and „hopper empty“-message are not included in the scope of supply and have to be ordered separately.

Contents of storage hopper	Execution	h1	H1	h2	H2
60 l	Storage hopper	685	780		
100 l	Storage hopper, 1 Crest			840	935
140 l	Storage hopper, 2 Crests			995	1090

11/99 kt

Subject to technical modifications.

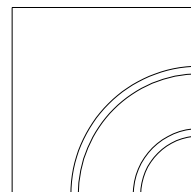
# Volumetric metering screw

with adjustable flow rate

VDS 25/4...VDS 60/200

# sera

Dosieren  
Fördern  
Verdichten



## Technical data

Volumetric metering screw			Drive	
VDS Type	Rated capacity* (l/h)	Spiral-Ø/ Pitch (mm)	Power (kW)	n <sub>2</sub> (1/min)
25/4	0,4 - 4	25/12,5	0,18	1,5 - 15
25/16	1,6 - 16	25/15	0,18	6,8 - 68
25/30	3 - 30	25/25	0,18	6,8 - 68
40/80	8 - 80	40/40	0,18	6,8 - 68
60/200	20 - 200	60/40	0,18	6,8 - 68

\*Details are for standard types. The electrical data are valid for the standard motor. In case of special design draw these from the certificate of compliance of VDS.

Dosing capacities less than 0,4 l/h and over 200 l/h on request.

The maximum load of the dosing spiral with medium must not exceed 100 kg!

The volumetric metering screw is appropriate only for pourable media.

Don't use for sticky, bridging or battering media!

In case the medium shows one of these particularities contact **s e r a** before!

Adhere to operating instruction TA-044!

## Execution

Housing: Sheet steel, with internal plastic coating  
or 1.4301  
(other materials on request)

Dosing spiral: 1.4301

Dosing tube: with ring heater, 5 W, 24 V

Drive: Gear motor 0,18 kW, 230/400 V, 50/60 Hz, IP 55  
Electronic control with speed controller

Contents VDS: 15 l  
Option: Storage hopper: 60 l  
Storage hopper with 1 crest: 100 l  
Storage hopper with 2 crests: 140 l (max. 2 crests)

Weight: VDS: 25 kg  
Electronic control: 7 kg

Option: Storage hopper with cover: 7 kg  
Crest 40 l: 4,5 kg

Subject to technical modifications.